



Probus Club of Central Edmonton

November 2016

Editor: Ken Hoffman

Speaker: November 15– Stefanie Drozda, Edmonton Waste Management Centre (EWMC)

The November events focused on the Edmonton Waste Management Centre (EWMC). It started with a presentation on November 15 by Stefanie Drozda. She spoke to us about a wide range of items, starting with the history of Edmonton waste management. In 1931 the idea of waste management was a land fill site - a dump. The first major one was the Clover Bar site. The waste management evolved over the years in 1988 the blue bag program was started. Through this a great percentage of household waste is recycled. She spoke about what can be recycled and how and what could not be recycled. Some of it was quite surprising you should check the website. She also spoke about several initiatives such as mulching program, Eco Stations and biofuel. Stefanie answered numerous questions clarifying the information in the slide presentation. We ended with a test, which we passed!

Tour: November 22 – Edmonton Waste Management Centre

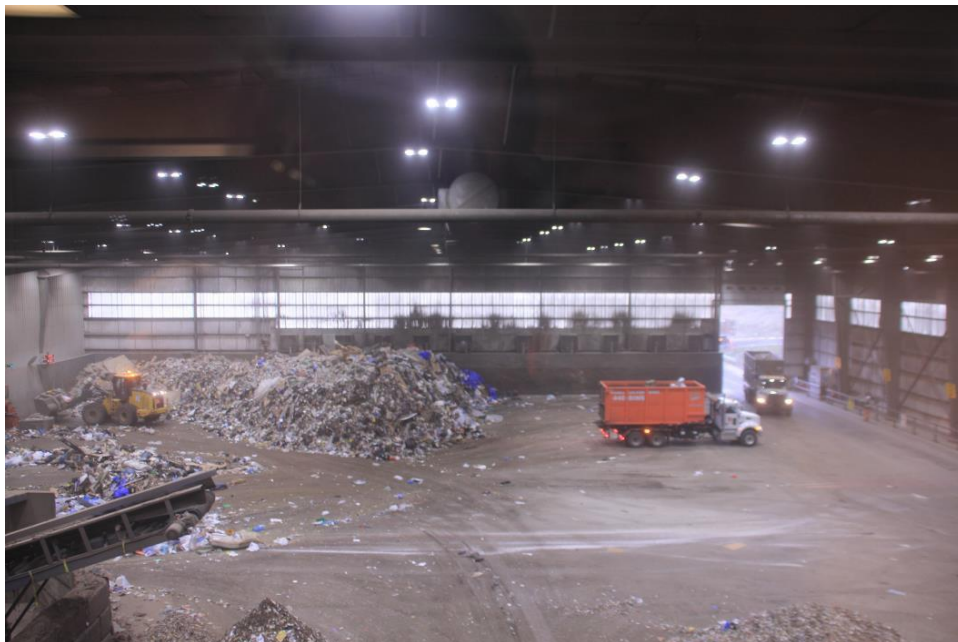
In the following week, members took advantage of the tours that were arranged. These were bus tours. Members brought guests, including spouses and grandchildren. There were 2 tours needed to accommodate all who signed up, each taking about two hours. I thank Joe and Bruce for providing me with notes from these tours. Pictures were provided by Bruce.

Each tour started with a short film on the operations of the various facilities and the site layout. Neil was the guide and driver for both and could handle the many questions including those from our gardening members. His usual audience are grade four students, so I am told we improved his day with our take on garbage.

The first stop was the Processing and Transfer station. Here the trucks from Edmonton drop off waste for composting, conversion to biofuels and transfer to landfill. On average, 4,500 trucks bearing 9,800 tons of material cross the scale every week. The Clover Bar Landfill is no longer active and the last stop for waste is at the Ryley Landfill.



The second stop was the Materials Recovery Facility. Members watched as waste was sorted by staff working beside long conveyor belts. Staff work 10 hour shifts.



Other facilities on the tour included the Construction and Demolition site where concrete, wood and shingles are separated. The usefulness of wood became evident later as it is a source of carbon for the organics processing program. Neil was particularly proud of the machinery used to churn the waste and wood to form excellent compost. EWMC markets their compost under the brand Second Nature.



At the conclusion of the tour, Neil drove the mini bus to the top of the Clover Bar Landfill for an interesting view of Edmonton and the river valley.

